



Pearson
English

International Certificate

(PTE General)

Level 2
Intermediate

Paper Reference: 4062

Pearson Education Ltd

Practice paper written by Pearson English exam authors

© May 2021



SPOKEN
PRACTICE
TEST

1

Please check the table below for the total time given to complete the spoken test at this level. Instructions and materials for interlocutors and test takers are provided in this document.

Sections	Level A1	Level 1	Level 2	Level 3	Level 4	Level 5
10	Not tested at this level		5.5 minutes		6 minutes	
11	3.5 minutes					
12						

The spoken test is scored out of **25 points** in total at all levels. Please see the Guide to International Certificate at this level for further information.

Please note: The design of the practice tests are not identical to actual International Certificate tests, however the content is equivalent.

Instructions for interlocutors

Pearson English International Certificate (PTE General) Level 2

The interlocutor conducts the test in accordance with the test specifications, the general guide for interlocutors and the interlocutor Script. Make sure you read these before you conduct the test.

The speaking test has 3 sections

Section 10 Discussion: 2 minutes

Section 11 Picture: 1.5 minutes

Section 12 Role Play: 2 minutes

Please note: Sections 11 and 12 have two sets of tasks: A and B. Students with odd test taker numbers should do 11A and 12A; students with even test taker numbers should do 11B and 12B.

Please use the relevant enclosed picture card and test taker role card when administering Section 11 and Section 12 of the test.

In an actual exam please note the following instructions are used:

Please ensure that you record the speaking test as instructed. Test takers must take all the relevant sections of the test.

When you record a test, please state clearly at the beginning of the test:

- Centre number
- Level being tested
- Name and examiner of the Interlocutor
- Full names and numbers of each test taker

Start test with the following:

Good morning/afternoon. My name's _____

- Check test taker's name against attendance sheet.
- Start timer.
- Begin test.

Standard Question: Can you tell me your name please?

SECTION 10 DISCUSSION (2 MINUTES)

Now we are going to discuss something together. The topic is: "Exams are a waste of time that can be better used for teaching" What do you think?

(Use the following arguments as appropriate to take an opposing view to that of the test taker).

For

- Students can know how good they are.
- Good grades can lead to good jobs.
- Teachers can compare students' performance.
- Taking exams prepares students for a competitive world.

Against

- Exams can be stressful for some people.
- Failure leads to lack of confidence.
- Exams are not always relevant to future needs.
- Exams favour students with good memory.

SECTION 11A PICTURE (1.5 MINUTES)

Now, here is a picture of some people camping. Please tell me what you can see in the picture and say what you think the people were doing before they got here, and how they are feeling now.

[Hand the picture to the test taker]



Alright? Begin now please.

[Allow the test taker to speak for about one minute, then ask this secondary prompt.]

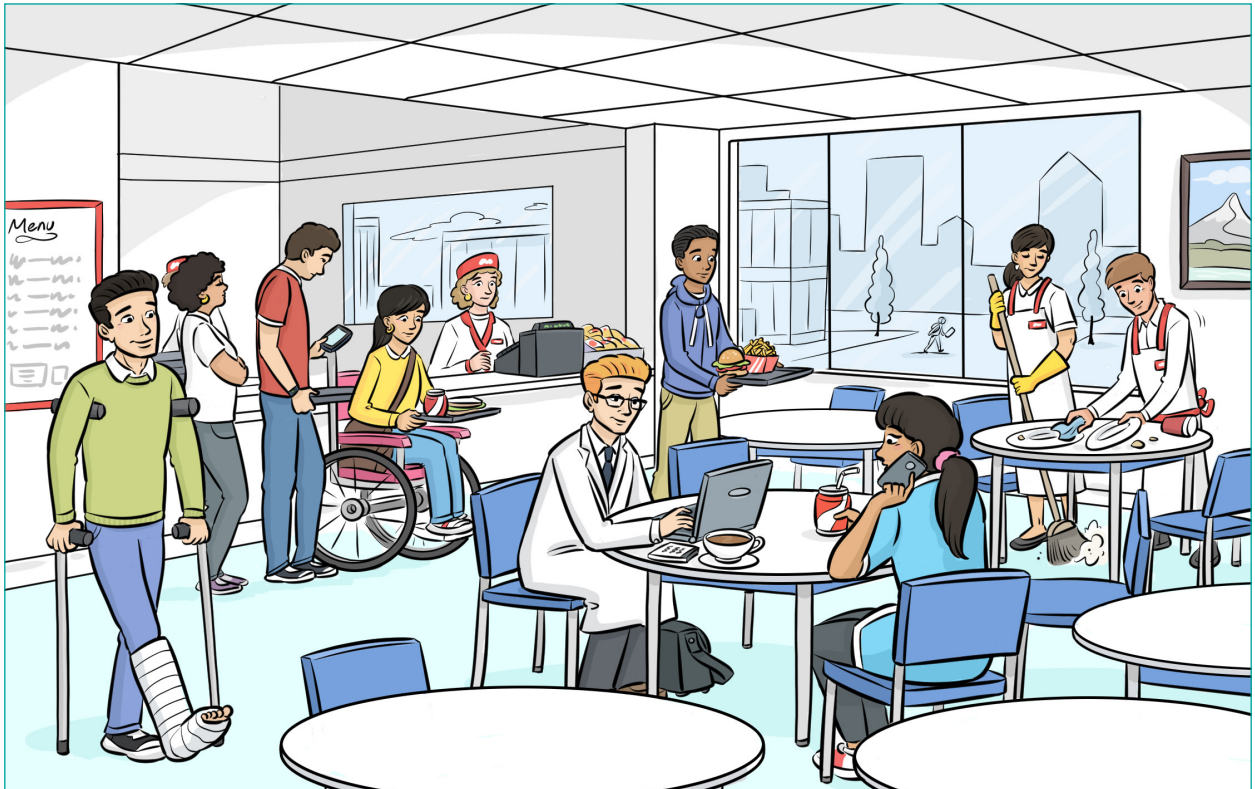
What do you think the people will do next?

[Retrieve the picture]

SECTION 11B PICTURE (1.5 MINUTES)

Now, here is a picture of a cafeteria. Please tell me what you can see in the picture and say what you think the people's jobs are, and what they are doing now.

[Hand the picture to the test taker]



Alright? Begin now please.

[Allow the test taker to speak for about 45 seconds, then ask this secondary prompt.]

What do you think the people will do next?

[Retrieve the picture]

SECTION 12A ROLE PLAY (2 MINUTES)

Now we are going to take part in a role play. Here is a card with the situation on it. Please read it to yourself.

[Hand the card to the test taker. Allow up to 15 seconds to study the card.]

Test taker's card

You are at home one hot Saturday morning and your friend has just come to your house. You are talking about what to do for your next holidays. The examiner is your friend.

- Comment that school finishes soon. Ask where you and your friend could go for a holiday.
- Suggest going on a walking holiday.
- Suggest in the mountains, and taking a tent to sleep in.
- Describe the place you went last year.

Interlocutor's script

You are at home one hot Saturday morning and your friend has just come to your house. You are talking about what to do for your next holidays. I am your friend.

Alright? You start.

Suggested prompts

- Say you don't know. What would you like to do?
- Ask where, and what it would be like.
- Agree. Ask if your friend knows a good place.
- Agree, say it sounds like a good idea.

[Retrieve the card]

Thank you. That is the end of the test.

SECTION 12B ROLE PLAY (2 MINUTES)

Now we are going to take part in a role play. Here is a card with the situation on it. Please read it to yourself.

[Hand the card to the test taker. Allow up to 15 seconds to study the card.]

Test taker's card

You are with a friend at a cafeteria. You are talking about what you want to eat and drink. The examiner is your friend.

- See what you can get to eat and drink here.
- Find out what is cheap.
- Ask for something to eat.
- Say where you will sit.

Interlocutor's script

You are with a friend at a cafeteria. You are talking about what you want to eat and drink. I am your friend.

Alright? I'll start.

Well, here we are...

Suggested prompts

- I'll go and get a menu.
- Chips is usually cheap. Or pizza.
- Ok. You get a table and I'll get the food.
- Ok, I'll find you.

[Retrieve the card]

Thank you. That is the end of the test.

SECTION 11

Picture – 11A



SECTION 12

Card – 12A

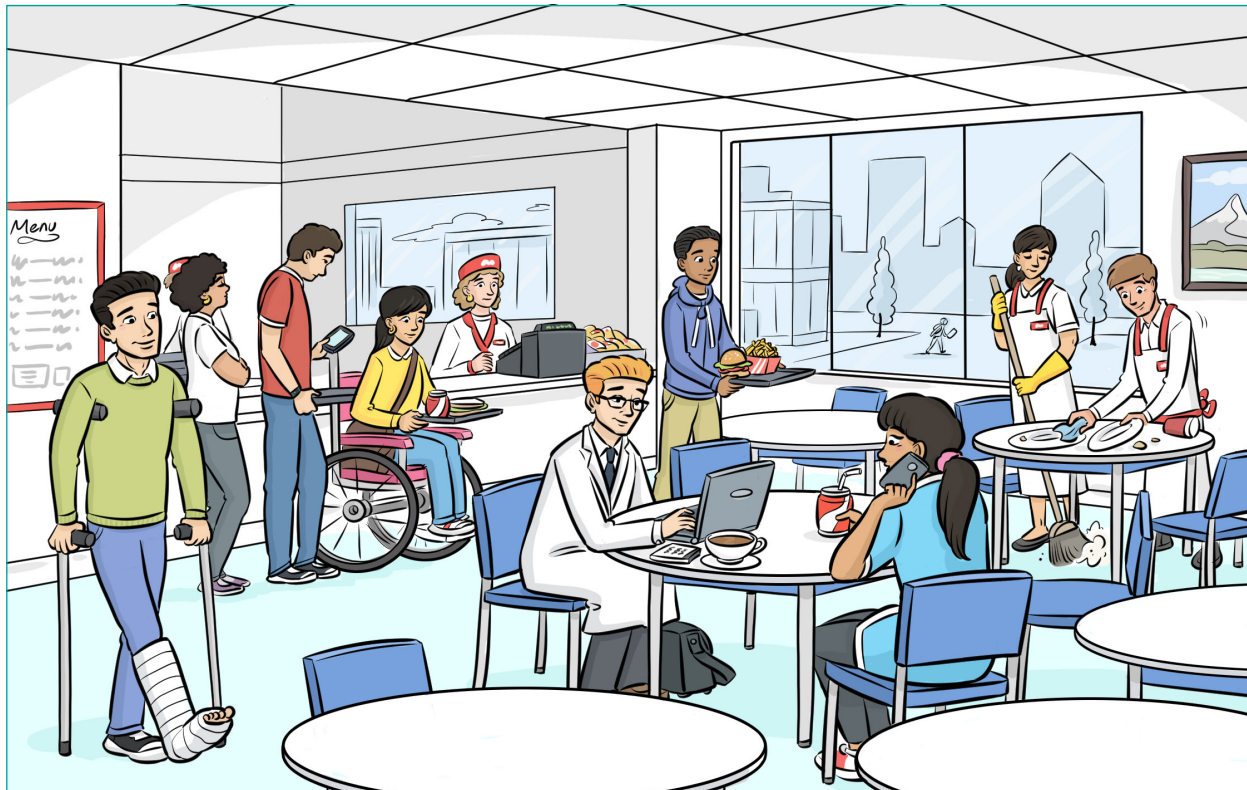
Test taker's card

You are at home one hot Saturday morning and your friend has just come to your house. You are talking about what to do for your next holidays. The examiner is your friend.

- Comment that school finishes soon. Ask where you and your friend could go for a holiday.
- Suggest going on a walking holiday.
- Suggest in the mountains, and taking a tent to sleep in.
- Describe the place you went last year.

SECTION 11

Picture – 11B



SECTION 12

Card – 12B

Test taker's card

You are with a friend at a cafeteria. You are talking about what you want to eat and drink. The examiner is your friend.

- See what you can get to eat and drink here.
- Find out what is cheap.
- Ask for something to eat.
- Say where you will sit.